



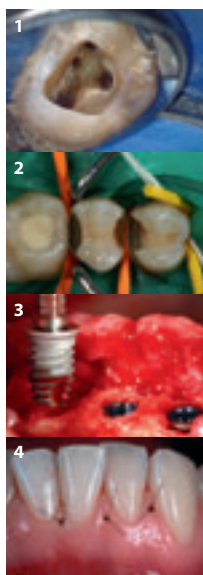
# *Planmeca Sovereign*

## *Facilitating endodontics*



*Planmeca Sovereign dental unit family models have several special features and operations to ease the workflow of endodontic treatments. Enjoy the assistance of a unit-mounted microscope, intraoral X-ray unit and surgical micromotor, to mention only a few of the features.*

Pure Innovation **PLANMECA**



### Implantmed surgical micromotor

The unit-mounted Implantmed is a peerless surgical micromotor when compared with tabletop devices. The handpiece has several adjustable torque and speed settings for each file type. Implantmed is operated using the unit foot control, and adjustments are easily made using the unit's graphical user interface.

### Micromotors with precise speed and torque control

The unit can be equipped with a wide selection of micromotors, all featuring five presets which can be adjusted and named according to the treatment phase. The Planmeca Minendo brushless micromotor with LED light is exceptionally small and light, featuring a wide speed range and excellent torque irrespective of rpm. Other micromotors suitable for endodontics are also available.

### Microscope – you can only treat what you can see

With the unit-mounted Zeiss OPMI pico microscope, the smallest details and finest structures are clearly visible, enabling you to visualise brilliant, high-contrast, true-colour images – even down to the apex of a straight root canal. With the MORA interface, the user can remain in an upright viewing position regardless of how the microscope is positioned, and for documentation and communication an optional videocamera is available.

### Digital intraoral images speed up the workflow

As an alternative to the microscope, the unit pylon can be equipped with the Planmeca Intra intraoral X-ray unit. A unit mounted intraoral X-ray unit allows for the patient to remain in the patient chair during the imaging procedure. When combined with the Planmeca ProSensor digital sensor installed on the imaging device tube head, the digital X-ray images are instantly available for viewing on the unit-mounted monitor.

### Extra comfort for long treatment sessions

The Ultra upholstery is filled with special viscoelastic foam that adapts to the patient's body shape and regains its original shape after the treatment. It provides extra comfort especially appreciated in long treatment sessions.

Application images from top to bottom:  
1. G. A. Bruder, DMD, Boston, USA  
2. + 3. Practice Dr. W. Bolz, Prof. Dr. H. Wachtel, Prof. Dr. M. Hürzeler, Dr. O. Zühr, Dr. W. Richter, Munich, Germany  
4. Dr. R. Burkhardt, Zürich, Switzerland



Planmeca Oy  
Asentajankatu 6 | 00880 Helsinki | Finland  
tel. +358 20 7795 500 | fax +358 20 7795 555  
sales@planmeca.com | www.planmeca.com

Images may contain optional items not included in standard delivery. Rights for changes reserved.